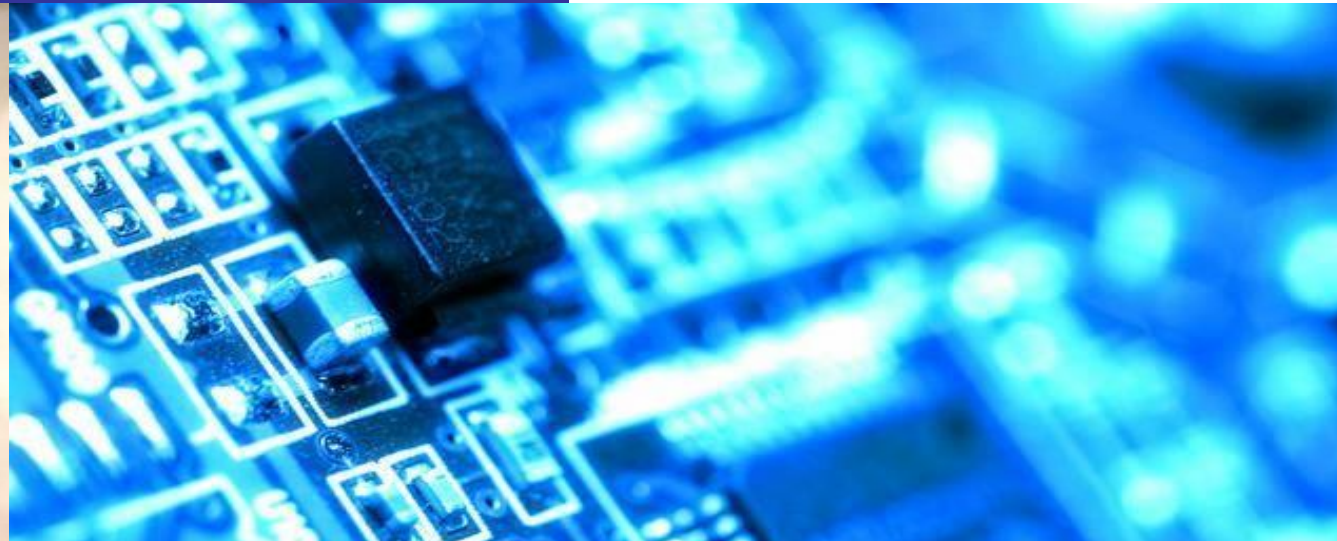


Singapore Manufacturing Federation (SMF)

Championing Manufacturing
– Partner in Nation Building since 1932



**Singapore
Manufacturing
Federation**
新加坡制造商总会



History of Singapore Manufacturing Federation (SMF)

- **1932: Established as Singapore Manufacturers' Association (SMA)**
 - Represented the interests of the manufacturing industry in Singapore
- **1996: Renamed the Singapore Confederation of Industries (SCI)**
 - Expanded its role as the umbrella body for all industries, including manufacturing
- **2003: Name changed to Singapore Manufacturers' Federation (SMa)**
 - Re-focussed on manufacturing and manufacturing-related industries
- **2012: Name changed to Singapore Manufacturing Federation (SMF)**
 - Transformed into a national institution with a manufacturing base



Singapore Prime Minister Mr Lee Hsien Loong officially launched the new name and logo of Singapore Manufacturing Federation at the SMF 80th Anniversary Gala Dinner on 29th September 2012.



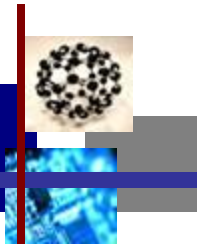
Mission & Vision

Mission

To represent the business interests of the Singapore manufacturing sector, and to facilitate its competitiveness and sustainable growth.

Vision

To be a world-recognised national federation with a strong membership base from the manufacturing sector, committed to creating value and services for our members, manufacturing sector and Singapore.



Organisation Structure

BOARD OF GOVERNORS

George Yeo
Renny Yeo
Bob Tan

COUNCIL

Mr Douglas Foo, President
Council Members

EXECUTIVE COMMITTEE (Appointed from within Council)

INDUSTRY GROUPS

Vertical Coverage

Chairman appointed
by Industry Groups.

Deal with industry
specific interests

CENTRES OF EXCELLENCE

Horizontal Coverage

Chairman appointed
by Council.

Deal with the wider
manufacturing sector

SECRETARIAT

Organised under the
Secretary-General

Appointed by Council

MGMT/FUNCTION COMMITTEES

Horizontal Coverage

Chairman appointed
by Council.

Deal with matters
affecting all
industries



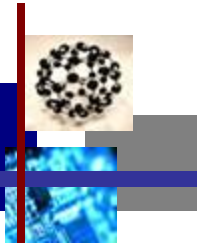
Members' Profile

- **3000 companies as members**
- **Comprise of manufacturing and manufacturing-related industries covering the entire spectrum of Singapore's manufacturing sector**
- **Leading Multinational Corporations (MNCs), local companies and SMEs as members**



SMF's Key Roles

- **Represents members' interests**
 - Provide industries' feedback on pertinent issues to government agencies
 - Participate in government advisory panels and dialogues
- **Updates and assists members to adopt latest developments in productivity, safety, health, security and technology**
- **Provides platforms for networking and collaborations**
- **Creates business opportunities and helps companies to invest and grow through business missions, exhibitions and business matching sessions**
 - Over 50 trade exhibitions organised annually
 - Over 50 business matching sessions organised annually
 - Over 400 events and activities annually
- **Enhances members' competitiveness through information sharing, training, upgrading and specialist consultancy**



SMF Industry Groups

- **Automation Technology**
- **Building Products & Construction Materials**
- **Electrical, Electronics & Allied Industries**
- **Energy & Chemicals**
- **Food & Beverage**
- **Lifestyle**
- **Medical Technology**
- **Life Sciences**
- **Metal, Machinery & Engineering**
- **Packaging Council of Singapore**

SMF: Authority to Process Certificate of Origin (CO)

- Singapore Manufacturing Federation is one of five organisations to be authorised by Singapore Customs, pursuant to Regulation 23 of Imports and Exports Regulations (Cap.272A, R1, 1999 ed.) to issue both
 - Certificate of Origin (CO)
 - Electronic Certificate of Origin (ECO)
- Express Service on-site
 - Endorsement of CO within 20 minutes
 - Extension of operating hours
 - Photocopy Services
 - Typing Services (*only applicable for CO form*)



What Differentiates SMF: Our 6 Centres of Excellence



SMF Standards Development Organisation (SMF-SDO)



**SMF Institute
of Higher Learning**

SMF Institute of Higher Learning (SMF Institute)



**SME
Centre@SMF**

SME Centre (SME Centre@SMF)



CCL
SMF Centre for
Corporate Learning

SMF Centre for Corporate Learning (SMF CCL)



SiPi
SMF Singapore Innovation
& Productivity Institute

SMF Singapore Innovation & Productivity Institute (SMF SiPi)

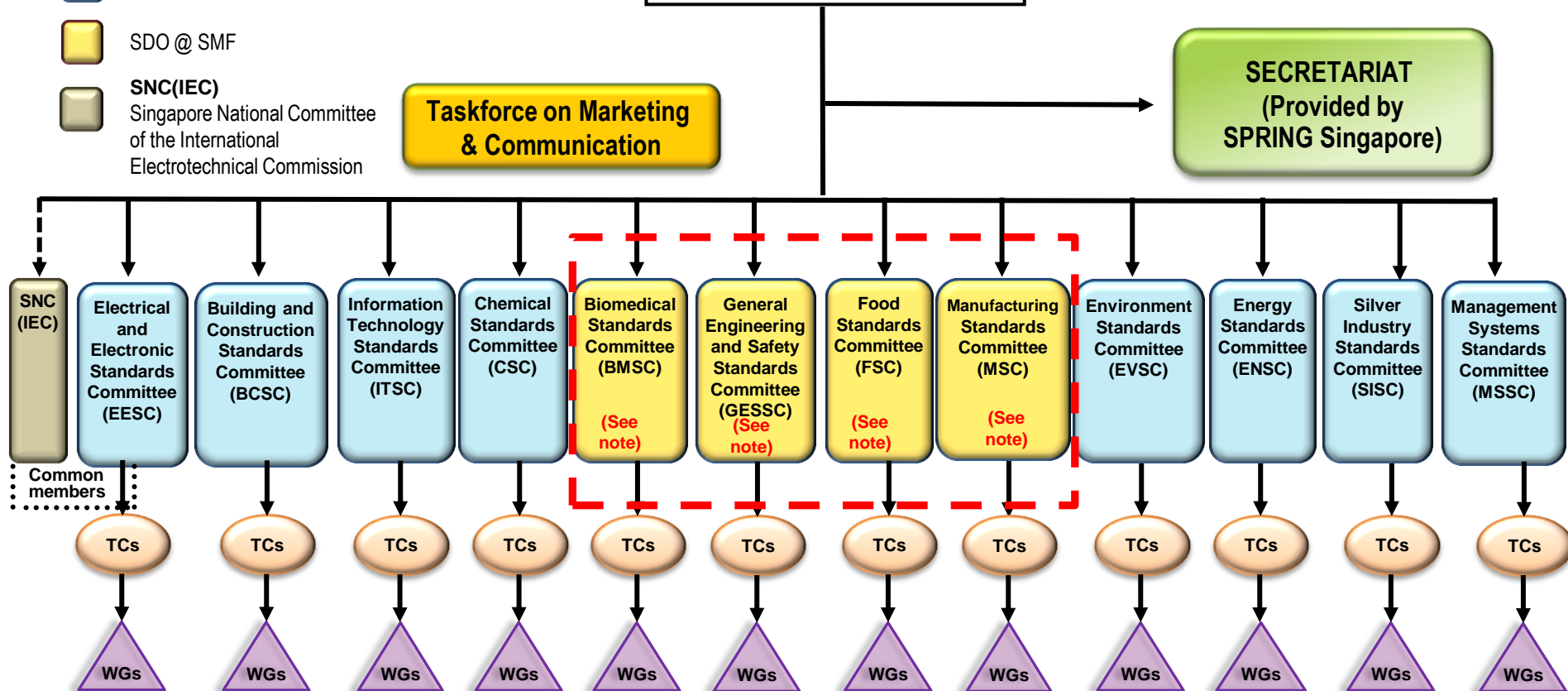


**Global Standards 1 Singapore (GS1 Singapore)
(formerly Singapore Article Number Council)**

Singapore Standardisation Structure

Legend:

-  Standards Committee
-  SDO @ SMF
-  **SNC(IEC)**
Singapore National Committee
of the International
Electrotechnical Commission



Note: SMF has been appointed by SPRING Singapore as a Standard Development Organisation (SDO) to administer the development, promotion and implementation of Biomedical, General Engineering & Safety, Food and Manufacturing Standards.

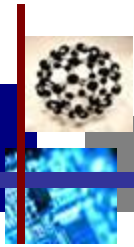


SMF Institute of Higher Learning

- **Established in 2003**, SMF Institute strongly advocates education and continuous capacity building of human capital in the region. Through partnerships with renowned overseas universities and professional institutions, SMF Institute provides a wide range of graduate, post-graduate and professional qualifications.
- In May 2010, SMF Institute was amongst the early batch of private educational institutions (PEIs) to be registered under the Council for Private Education's (CPE) Enhanced Registration Framework (ERF). By September 2010, SMF Institute was awarded certification under the voluntary EduTrust certification scheme by CPE. This distinguishes SMF Institute as one of the higher quality providers in the Singapore's private education industry.
- In 2013-2014, SMF Institute continues to enhance our services to our students with the implementation of the student management system and the moodle e-learning platform.
- Our current Education partners & affiliates



- The Institute's certificates and diplomas are uniquely recognized and endorsed by the various industry groups under Singapore Manufacturing Federation. In addition, SMF Institute diplomas allow students to have possible first year exemptions into degree courses at Murdoch University, Edith Cowan University, Griffith University, RMIT, University of South Australia, and Flinders University, Australia.



SME Centre@SMF

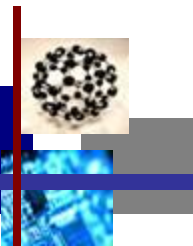
- Established in July 2005 through a partnership with SPRING Singapore and Singapore Manufacturing Federation (SMF)
- Set up as a strategic initiative to support SPRING's thrusts to develop an environment for enterprise growth
- Assists companies acquire & develop relevant business capabilities, competencies and best practices
- Provides free Business Advisory Services (BAS) and Productivity Advisory Services on productivity concepts understanding and useful toolkits.
- Since 2005, SME Centre@SMF has assisted in more than 20,000 SME cases.



SMF Centre for Corporate Learning

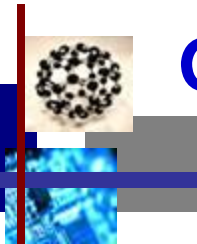
- SMF CCL is a wholly-owned subsidiary of SMF, a leading training provider with over 48 years of experience in conducting training in Singapore
- We take pride in providing productivity improvement, manufacturing-related, thought-leadership and personal development programmes
- An accredited Continuing Education and Training (CET) Centre with the Singapore Workforce Development Agency (WDA) since 2008
- The Authorised Education Provider with APICS (The Association for Operations Management) since 2009
- Delivers more than **200 courses to over 10,000 participants annually**





SMF Singapore Innovation & Productivity Institute

- Industry-led knowledge enterprise championing manufacturing excellence through innovation and productivity in Singapore's manufacturing sector
- Provides productivity resources and customised road mapping /coaching support to help enterprises implement specific productivity roadmaps
- Undertakes research and benchmarking to steer industry development
- Collaborates closely with the Singapore government agencies, industry experts, academia and overseas institutions to develop tools, case studies and localised best practices
- One-stop provider for innovation and productivity



Global Standards 1 Singapore (GS1)

Formerly Singapore Article Number Council

- Established since 1987.
- Pioneer and founder for barcoding in Singapore
- Secured **888** as country code for Singapore
- Administers the EAN/UCC Bar Code Systems & the National Electronic Product Catalogue
- Standard development and applications of radio frequency identification (RFID)
- Cold Chain Management Courses
- Promotion of new symbologies like QR Code, Databar, Datamatrix



SMF Unique One-Stop Service for Manufacturing and Manufacturing Services



MSE2016

MANUFACTURING **SOLUTIONS** EXPO

12 – 14 October 2016



Organised by:



Show Overview

Venue	: Suntec City Convention Centre
Date	: 12 October - 14 October 2016 (Wed – Fri)
Size	: 4,000 sqm
Attendees	: Approximately 3,000 (Trade and Business Professionals Only)
Exhibiting Companies	: 100

Organised by



MSE2016

MANUFACTURING **SOLUTIONS** EXPO

**Enterprise
System
Solutions**



**Industrial
Automation
Solutions**



**Environmental
Management
Solutions**



**Supply Chain
Management
Solutions**



**Consultancy
Training
Services**



Exhibit Profile

Enterprise System Solutions

Asset Management Systems
Asset Tracking & Monitoring
Big Data Analytics Management Software
Card Issue Management Systems
Cloud Computing
Computerized Maintenance Management Systems
Customer Relationship Management Software
Document Management Systems
Electronics Access Control
Enterprise Resource Planning
Internet, Intranets, Extranets Solutions
IP Camera, Video Surveillance System
Machine-to-Machine (M2M)
Manufacturing Resource Planning
Mobile Payment System
Productivity Tracking Software
Retail Business Management Solutions
Time and Attendance Management Solutions
Visitor Counter Management Systems
Workflow Management Software

Environment Management Solutions

Energy Management Systems / Services
Environment Management
Industrial Cleaning Solutions
Industrial Cooling Solutions
Industrial Waste Collection
Materials Recovery & Recycling
Pollution Control Technology
Power Systems
Renewable Energy & Alternative Fuels
Waste Management Services

Industrial Automation Solution

3D Printing
Automated Assembly Lines, Palletizing Systems, Picking & Sorting Systems
Cable Chain, Conveyor Systems
Embedded Systems, PLC, HMI, SCADA
Industrial Automatic Data Capturing and Identification Systems
Industrial Image Processing Systems
Industrial PCs, Smart Touch Computer
Laser Scanner, Laser Technology
Manufacturing Execution System
Measuring and Test Systems
Plant Maintenance Management System
Sensors and Actuators

Robotics

Industrial / Service Robots
Machine, Appliances & Component for Robotics
Robotics Assembly Systems
Robotics Handling Systems
Robot Simulation & Vision Systems

Precision Engineering

Control Systems & Instruments
Coordinate Measurement Equipment
Drive Motors & Linear Positioning Systems
Electronics, Sensors and Diagnostics
Machine Vision Technology
Optical Measuring Instruments
Pneumatics and Motion Control Systems
Software & Design (CAD/CAM, CAE, Rapid Prototyping)
Test & Measurement Devices & Systems

Supply Chain Management Solutions

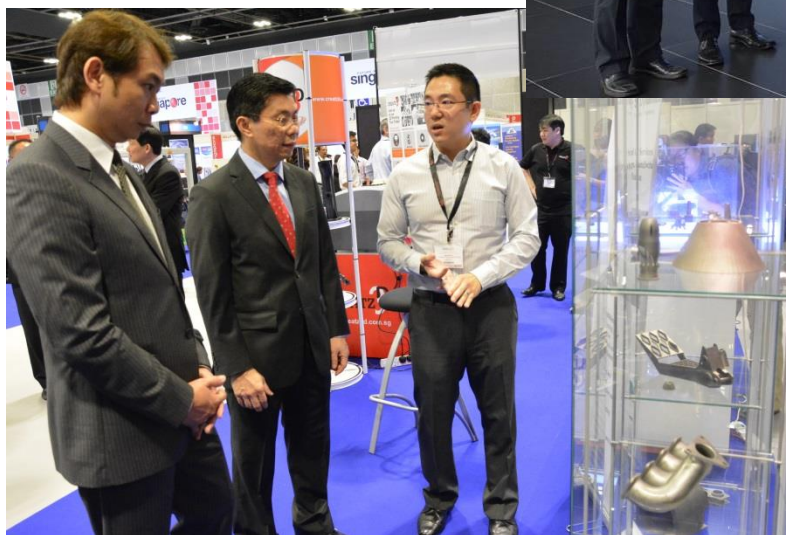
Bar Coding Scanner, Printers, Labels & Tags
Compliance & Risk Management
RFID
Industrial Coding & Marking Solutions
Inkjet Printing
Logistics Management Solutions
Material Handling Systems
Measurement & Weighing
Packaging Accessories
Quality Control & Testing
Storage & Warehousing
Supply Chain Analysis & Design
Transport & Fleet Management Systems
Vacuum / Wrapping Machinery
Warehousing and Order Fulfillment Management

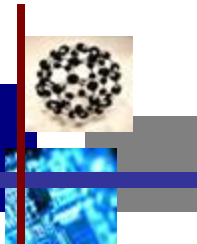
Consultancy / Training Services

Enterprise Banking Loans
Insurance Coverage
Manufacturing / HR / Finance
Consultancy
Manufacturing / Work Safety /
Productivity Courses
Outsourcing Services

MSE 2015 Highlights

MSE2016
MANUFACTURING SOLUTIONS EXPO





For more information, please contact



**Singapore
Manufacturing
Federation**

新加坡制造商总会

Singapore Manufacturing Federation (SMF)

**2985 Jalan Bukit Merah
Singapore 159457**

Telephone (65) 6826 3000 Fax (65) 6826 3068

Website www.smfederation.sg

Email contact@smfederation.org.sg